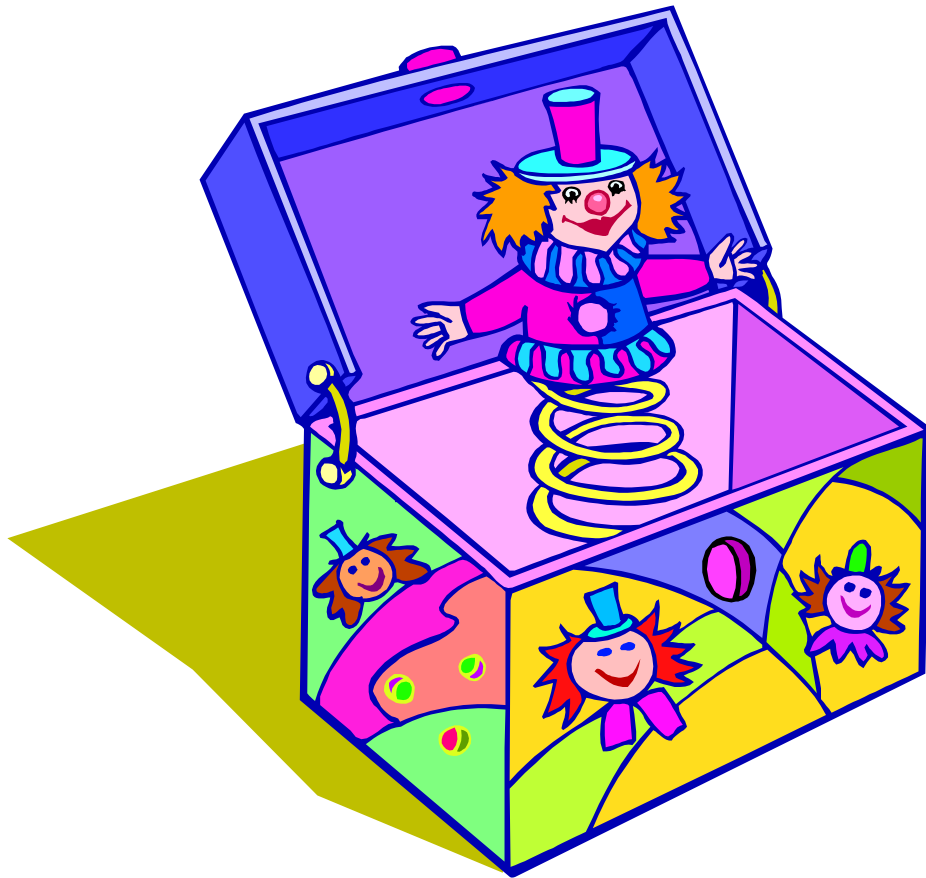


Welwyn St. Mary's Primary School

# Spring Term 2024



## Reception

**Welcome back! We hope you all had a good Christmas and a happy New Year.**

## **Topics for this term.**

Our first topic this year is Winter. We will be thinking about seasonal changes and exploring ways to stay warm in the winter. We will also be comparing Welwyn to the Arctic and looking at the different landscape and animals found there.

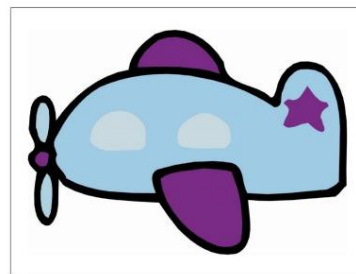
Next, we will be exploring Toys. We will be thinking about



Toys that move



Old and new toys



We will also be looking at different kinds of birds to tie in with the RSPB big bird watch at the end of January.

After this we will focus on people that help us and will include:



People that help us at home and school



People that help us in the local community



The Emergency Services



If there is anyone who would like to talk to the children about their work as part of this topic, we would welcome you with open arms, especially anyone involved in the emergency services. Please let us know.

Towards the end of the spring term, we will explore Spring, including growth of plants and humans and Easter.

We will also look at the story of Handa's Surprise. This will be a great opportunity for us to look at different countries and discuss similarities and differences with our own.

Our Whole School book focus will be Traction Man. We will explore Literacy and DT as part of our book focus.

In maths we will continue to use the Herts Essentials and Maths Mastery schemes. We will continue to develop the children's understanding of subitising, counting, patterns in number and addition.

We will continue to use the Jigsaw PSHE scheme and will focus on resilience and perseverance.

There are a few things that you can continue to do to help us:

- Please continue to read with your child for a short period every day. Your child will not only benefit from reading to you but also from hearing you read to them.
- Our PE day is Tuesday for both classes. Please continue to send your child in wearing their PE kits on a Tuesday each week. Please ensure earrings are removed or taped up for PE. Thank you.



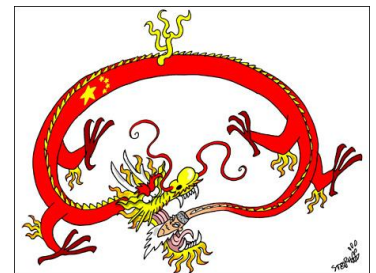
- Please continue to send your child into school each morning with their book bag and a water bottle. You can either provide your own fresh fruit and vegetables for snack, or have school snack.



If you would like to help in class in any way, please let us know as we would welcome your time and talents! This could be reading with the children, craft or possibly something else you could offer. This will be dependent on DBS checks.

### **Important Dates**

February 10<sup>th</sup> is Chinese New Year. During this week, we will be learning about how people celebrate this. If your family celebrate Chinese New Year, we would love to welcome you in to talk to our classes.



**Parental Consultations** will take place in Spring term. Please keep an eye on the Newsletters for the dates.

### **Class Assembly**

Our joint class assembly will be in March. Please keep an eye on the whole school Newsletter for the date and more information will follow.

Please keep checking the monthly newsletters and website for any new events as well as our weekly letters.

Mrs Deanna Castiglione, Mrs Jane Newstead, Miss Nina Popham, Mrs Laura Kinsella, Mrs Hayley Hanley and Miss Tammy Spence