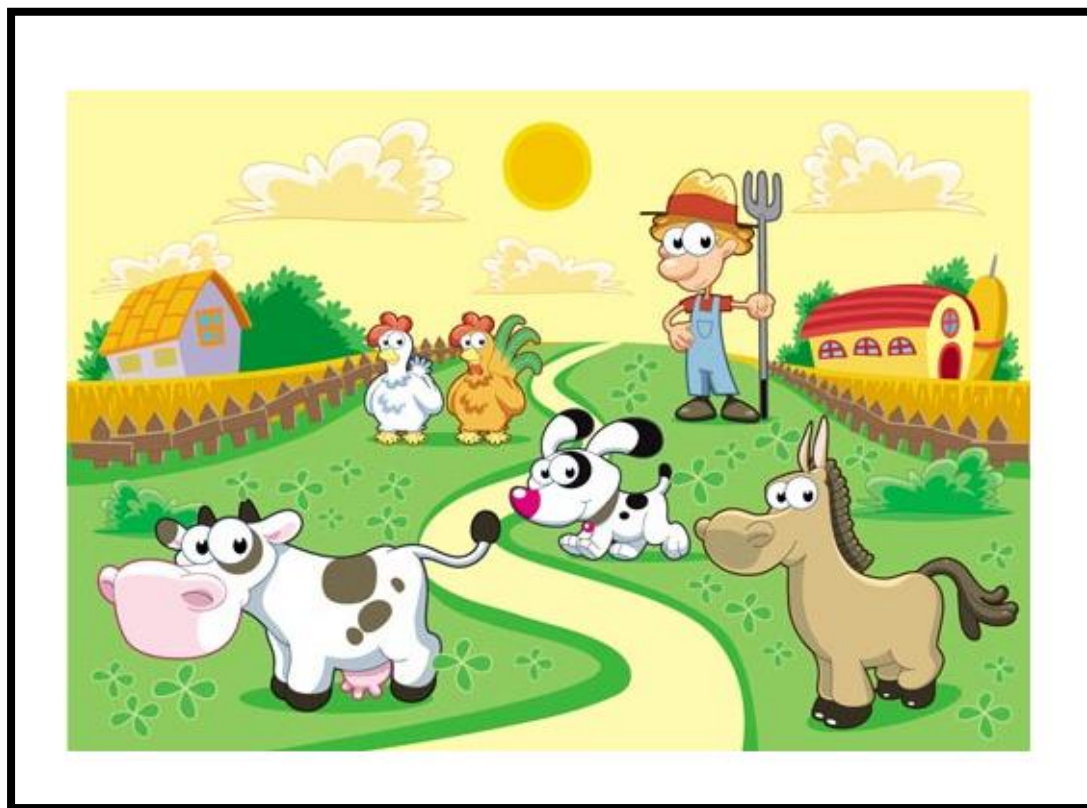


Welwyn St. Mary's Primary School

Summer Term 2026



Year R



Topics for this term

This term our topics are Growth, Mini-beasts and Journeys.

During the first half-term we will be continuing to learn about the growth and lifecycles of different living be investigating different mini-beasts.

Our work will include:

- finding out about the lifecycles of frogs and butterflies following our plant investigations
- finding out about the mini-beasts that live all around us
- using our garden and the Nature Reserve to observe mini-beasts in their natural habitats
- creating our own mini-beasts using different media

As part of our topic, we will be having a visit from Ark Farm in June to look at animals.

During the second half-term, we will base our learning on different journeys:

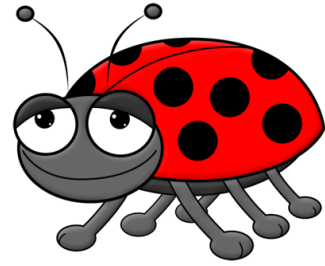
- a journey into space
- journeys around the world
- journeys on sea
- our summer holiday plans

As part of our journey's topic, we will be:

- following directions and making simple maps
- finding out about other countries, their cultures and beliefs

In RE this term, we will be looking at what 'precious' means and how we can look after our world.

We will also be continuing to use the Jigsaw PSHE scheme with the focus on the topics 'relationships' and 'changing me'.





Here are a few things that you can continue to do to help us.



- Please continue to read with your child for a short period every day. Your child will not only benefit from reading to you but also from hearing you read to them. Also, continue to help them to learn the flashcards they bring home.
- Please check school bags daily for letters and other bits that may be sent home from school.
- Please ensure that any new summer uniform is clearly named especially school jumpers and cardigans which tend to get taken off during playtimes.
- In the summer term, it is essential that you put sun cream on your child before they come to school as we spend a lot of time outside. Also, please remember to send them into school with a named school sun hat and a bottle of water every day.
- Please ensure your child attends school in their PE kit on their PE day: **Tuesday** for both classes.
- In addition, a gentle reminder that nail polish, temporary tattoos and jewellery are not part of our school uniform and should, therefore, not be worn when at school.



Dates for your diary:

Please keep an eye on the weekly letters we send and the whole school newsletters for diary dates.



Many Thanks,



Mrs May, Mrs Sanyal and the EYFS team





Our Uniform

Our school endeavours to ensure that our uniform is as gender neutral as possible.

School Uniform	
Trousers, shorts, skirt, pinafore	Grey
Polo shirt, shirt, blouse (with or without logo)	White
School sweatshirt, cardigan *(with or without logo)	Maroon
Plain sensible shoes (no trainers, sandals or boots)	Black
Socks/tights (not trainer socks)	Plain grey
School pink check cotton dress and plain white socks (maybe worn in summer term and up to October half term only)	
*Preferably children should have one sweatshirt or cardigan with a logo	

Additional items
Water bottle
Sun hat (in summer)
Reception and Year 1 – School book bag from uniform supplier
Year 2 – Year 6 – Small rucksack
Hair accessories- small plain clips, bands, ribbons in brown, black or maroon
Key stage 2 - Shin pads for hockey and football
Optional fleece or jacket with school logo for outdoor use

PE Kit	
Plain PE shorts	Black
Long plain tracksuit bottoms for colder weather	Black
Trainers for outdoor games	
PE hoodie with house coloured logo	Available from uniform suppliers
Key Stage 1 and Reception only Coloured 'house' T-shirt	Available from the school office
Key Stage 2 only PE polo shirt with coloured house logo	Available from uniform suppliers
PE kit should be worn to school on PE days	

Jewellery

The only permitted jewellery that may be worn is:

- One pair of stud earrings (no other piercings are permitted). Earrings must be taken out or taped for PE.
 - A sensible wristwatch (a smartwatch maybe worn if classroom mode is enabled at all times), whilst on the school site and school trips etc.
- Jewellery is the responsibility of the pupil and not the school.

Hair

Long hair needs to be tied back for school, this is for safety and hygiene reasons and to ensure that children's vision is not impeded. Hair should not be cut too short and should not have designs / tramlines shaven into it.

Hairstyles should be smart and moderate in style. Brightly coloured hair is not permitted.

Large, excessive hair accessories should not be worn; however, small hair clips or plain headbands or ribbons in brown, black or maroon are acceptable.

At the Headteacher's discretion, there may be exceptions to the above in extreme circumstances e.g. a pupil may be permitted to cover their hair if they have hair loss / illness etc.

Make-Up

Pupils are not allowed to wear make-up or nail varnish. False nails are not permitted.

Labelling

All clothing, shoes, water bottles and school bags should be clearly labelled with your child's name.

Any lost clothing is to be taken to the lost property box. All lost property is retained for a term and is disposed of if it is not collected within this time.





Useful websites:



- purplemash.com
- topmarks.co.uk
- nrich.maths.org
- Phonics – <https://www.littlewandlelettersandsounds.org.uk/>
- ictgames.com – phonics and maths games
- Alphablocks – <https://www.bbc.co.uk/cbeebies/shows/alphablocks>
- Numberblocks – <https://www.bbc.co.uk/cbeebies/shows/numberblocks>
- www.mathsbot.com – useful for maths manipulatives such as tens frames.
- www.discoveryeducation.co.uk - click Login (top right of the screen) and select Espresso. This is useful for phonics videos, games and activities.
Pupil username: student15720 PW: Welwyn
- <https://www.learningtrajectories.org> – a good range of maths games.

