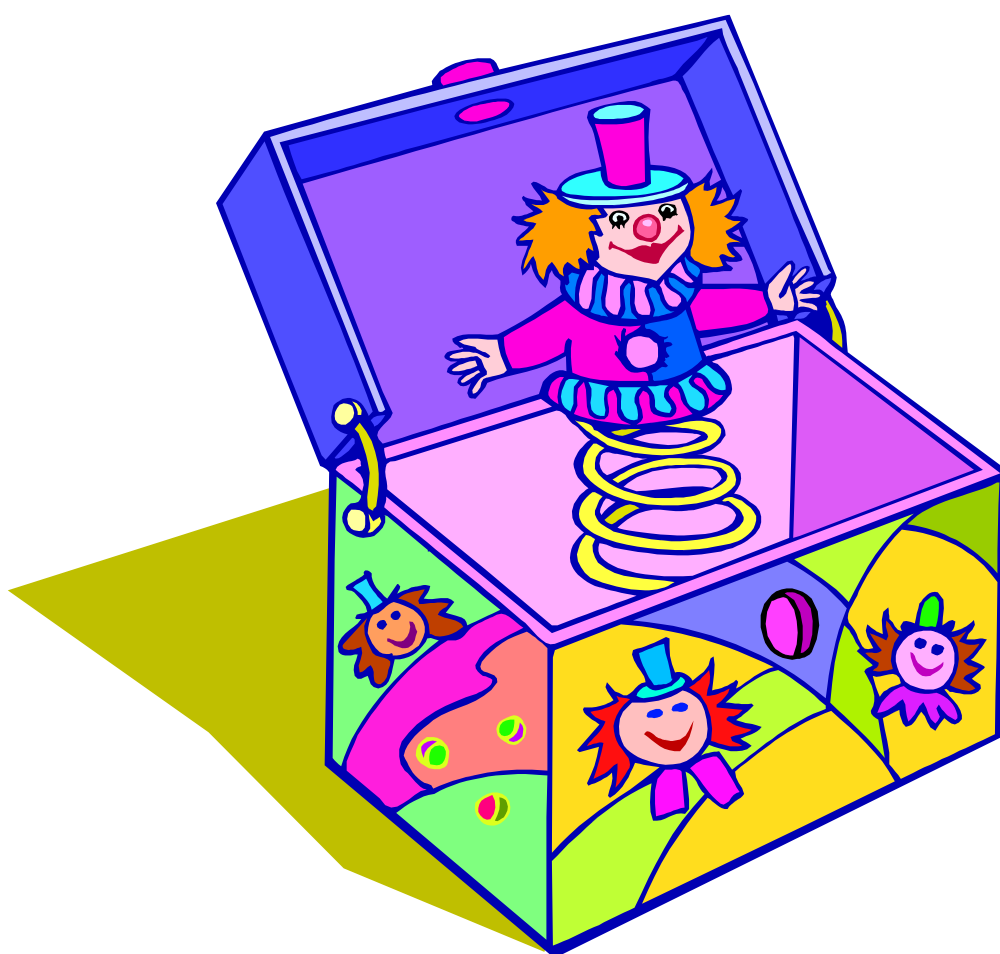


Welwyn St. Mary's Primary School

Spring Term 2026



Reception

Welcome back! We hope you all had a good Christmas and a happy New Year.

Topics for this term.

Spring 1 –

Our first topic this year is Winter. We will be thinking about seasonal changes and exploring ways to stay warm in the winter. We will also be comparing Welwyn to the Arctic and looking at the different landscape and animals found there.

Next we will be exploring Toys. We will be thinking about:

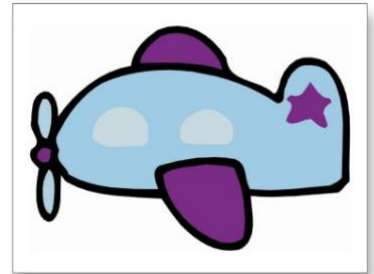


Toys that move



Old and new toys

We will also be looking at different kinds of birds to tie in with the RSPB big bird watch.



Spring 2 –

After this we will focus on people that help us and will include:



People that help us at home and school



People that help us in the local community



The Emergency Services



If there is anyone who would like to talk to the children about their work as part of this topic, we would welcome you with open arms, especially anyone involved in the emergency services. Please let us know.

Towards the end of the spring term, we will explore Spring, including growth of plants and humans and Easter.

We will also look at stories based in other countries. This will be an opportunity for us to look at different countries and discuss similarities and differences with our own.

In maths we will continue to use the Herts Essentials and Maths Mastery schemes. We will continue to develop the children's understanding of subitising, counting, patterns in number and addition.

We will continue to use the Jigsaw PSHE scheme and will focus on resilience and perseverance.

There are a few things that you can continue to do to help us:

- Please continue to read with your child for a short period every day. Your child will not only benefit from reading to you but also from hearing you read to them.

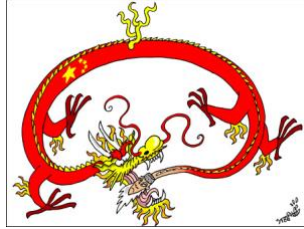


- Our PE day is Tuesday for both classes. Please continue to send your child in wearing their PE kits on a Tuesday each week. **Please ensure earrings are removed or taped up for PE.** Thank you.
- Please continue to send your child into school each morning with their book bag and carrying their water bottle. You can either provide your own fresh fruit and vegetables for snack, or have school snack.



Important Dates

- February 17th is Chinese New Year. During this week, we will be learning about how people celebrate this. If your family celebrate Chinese New Year, we would love to welcome you in to talk to our classes.



- Friday 13th March is our class assembly. Please keep an eye on the Newsletter and Parentmail for booking information.

Parental Consultations will take place on Wednesday 11th and Thursday 12th February. Please keep an eye on Parentmail for booking your appointment. Please note, we may request some meetings outside of these dates.

Please keep checking the monthly newsletters and website for any new events as well as our weekly letters.

Mrs Natasha May, Mrs Helena Sanyal and the EYFS team